

**PMCA1 Antibody**  
**Rabbit mAb**  
**Catalog # AP92213****Specification****PMCA1 Antibody - Product Information**

Application	WB, IHC
Primary Accession	<a href="#">P20020</a>
Reactivity	Rat
Clonality	Monoclonal
<b>Other Names</b>	
ATP2B1; PMCA1;	
Isotype	Rabbit IgG
Host	Rabbit
Calculated MW	134685 Da

**PMCA1 Antibody - Additional Information**

Dilution	WB~~1:1000 IHC~~1:100~500
Purification	Affinity-chromatography
Immunogen	A synthesized peptide derived from human PMCA1
Description	This magnesium-dependent enzyme catalyzes the hydrolysis of ATP coupled with the transport of calcium out of the cell.
Storage Condition and Buffer	Rabbit IgG in phosphate buffered saline , pH 7.4, 150mM NaCl, 0.02% sodium azide and 50% glycerol. Store at +4°C short term. Store at -20°C long term. Avoid freeze / thaw cycle.

**PMCA1 Antibody - Protein Information****Name** ATP2B1 ([HGNC:814](#))**Function**

Catalyzes the hydrolysis of ATP coupled with the transport of calcium from the cytoplasm to the extracellular space thereby maintaining intracellular calcium homeostasis (PubMed:<a href="http://www.uniprot.org/citations/35358416" target="\_blank">35358416</a>). Plays a role in blood pressure regulation through regulation of intracellular calcium concentration and nitric oxide production leading to regulation of vascular smooth muscle cells vasoconstriction. Positively regulates bone mineralization through absorption of calcium from the intestine. Plays dual roles in osteoclast differentiation and survival by regulating RANKL-induced calcium oscillations in preosteoclasts and mediating calcium extrusion in mature osteoclasts (By similarity). Regulates insulin sensitivity through calcium/calmodulin signaling pathway by regulating AKT1 activation and NOS3 activation in endothelial cells (PubMed:<a href="http://www.uniprot.org/citations/29104511"

target="\_blank">29104511</a>). May play a role in synaptic transmission by modulating calcium and proton dynamics at the synaptic vesicles.

#### Cellular Location

Cell membrane; Multi-pass membrane protein. Basolateral cell membrane {ECO:0000250|UniProtKB:G5E829}. Synapse {ECO:0000250|UniProtKB:G5E829} Presynaptic cell membrane {ECO:0000250|UniProtKB:G5E829}; Multi-pass membrane protein. Cytoplasmic vesicle, secretory vesicle, synaptic vesicle membrane {ECO:0000250|UniProtKB:G5E829}; Multi-pass membrane protein. Note=Colocalizes with SV2A in photoreceptor synaptic terminals. Colocalizes with NPTN to the immunological synapse. Colocalizes with EPB41 to the basolateral membrane in enterocyte. Preferentially sorted to recycling synaptic vesicles. {ECO:0000250|UniProtKB:G5E829}

#### Tissue Location

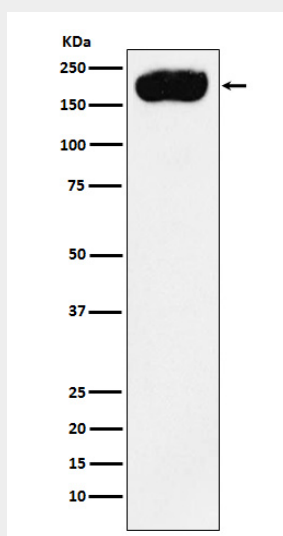
Isoform B: Ubiquitously expressed. Isoform C: Found in brain cortex, skeletal muscle and heart muscle. Isoform D: Has only been found in fetal skeletal muscle. Isoform K: Found in small intestine and liver. Abundantly expressed in the endometrial epithelial cells and glandular epithelial cells in early-proliferative phase and early-secretory phases (PubMed:21400627)

### PMCA1 Antibody - Protocols

Provided below are standard protocols that you may find useful for product applications.

- [Western Blot](#)
- [Blocking Peptides](#)
- [Dot Blot](#)
- [Immunohistochemistry](#)
- [Immunofluorescence](#)
- [Immunoprecipitation](#)
- [Flow Cytometry](#)
- [Cell Culture](#)

### PMCA1 Antibody - Images



Western blot analysis of PMCA1 expression in HepG2 cell lysate.